



# The Stand

Dr. Pamela T. Luster Resource Center

# Ed Code

## Areas of Support for Students



Food



Child care



Housing



Mental Health



Transportation



Physical



Technology

Health / Toiletries

# Programming

Direct Support	Student Parents	Pantry/Clothing	Workshops	Fresh Success
Counseling	Family Resource Center	EMERGENCY Food Pantry	Scholarships	School Supplies
Service Cards	Scholarships	Farmers and Mobile MARKETS	Conscious Spending	Hygiene/Medical
Gas/Bus/Uber	Diaper Bank	Professional Clothing	HeART Workshops	CalFresh E&T
CIE/211	WIC/Tax Credit Information	Laundry Supplies	Parent Café's	Testing Fees
Referrals	<b>Emergency Aid</b>	Personal Hygiene	Time Management	Transportation
<b>CalFresh</b>	Resiliency Fund	School Supplies	Parent Healing Circle	
HHS Support on Campus	Veterans Emergency Fund			



The background of the slide is a repeating pattern of orange pumpkin outlines. A dark teal rectangular box is centered on the page, containing the title and a list of requirements.

# Applying for Support

- TBH– Case Management System
- TBH– Pantry/Clothing Closet Tracking
- Verified enrollment

# Student Parents

## Collaboration

- **Family Resource Center** as a hub for resources and community connection.
- **Partnered with CalWORKs and CARE** to strengthen services and support for student parents.
- **Host engaging workshops** such as *Parent Cafés* and the *Student Parent Healing Circle* to promote wellness and peer support.
- Designate an area for children's apparel and family resources

## Scholarship

- **Joyce Hamilton Student Parent Scholarship**
- **Soroptimist: Live YOUR Dream Award**
- **CCC CalWORKs Association: Student Voices**

## Diaper Bank

- **Partnered with SDFB to receive Diapers and distribute**

# Fresh Success



## What is it?

The Fresh Success Program supports **Career Technical Education (CTE) students** enrolled in Cal-Fresh Employment and Training (E&T) by meeting basic needs to promote academic success, career readiness, and financial stability.

We offer **personalized counseling**, **educational planning**, **transportation assistance**, **textbooks** and **course materials**, **testing fees**, and other essential resources to participants.

## Revenue Generated & Students Supported

- Revenue Invoiced: \$47,809.87
- 25 students – largest number of participants

## Objectives

- Improve Employability & Career Readiness
- Remove Barriers to Success & Promote Economic Self-Sufficiency
- Increase Completion of Education Goals

# Housing

## Website

- **Housing Search Resources:**  
Mesa partners with College Pads for off-campus listings and provides links to rental, roommate, affordable housing, co-living, and short-term stay websites.
- **Budgeting & Credit Tips:**  
Giving students the basic of how to budget, how to use credit and when to get cosigners for housing.
- **Renting in San Diego:**  
The average rent for living in San Diego depending on unit type and the neighborhoods popular within Mesa students.
- **Roommate & Leasing Guidance:**  
How to search for roommates, communicate with them and resolve conflict resolution. What to check before signing a lease to avoid scams.
- **Emergency & Transitional Housing:**  
Provides info to shelters, transitional programs, and safe parking options for students facing housing insecurity.

## College Pads

- Partnership with College Pads. Student centered housing.
- Focus Group of students from different demographics wanting houses to rent and price points.
- More housing resources within the community.
- Students can sublease to other students.

## On Campus

- Mesa College Housing Fair had nearly 200 students attending.
- Spring Housing Survey partnered with Institutional Effectiveness to correlate academics and housing.
- 60% of students stated they take less units due to housing responsibilities.

### TBH Statistics

- 33% of Latino/x students
- 19% Black students
- 19% White students

# Collaborations

Student Success and Equity

ASG/Student Affairs

Financial Aid

Athletics

Institutional Effectiveness

Pride Center

CalWorks/CARE

Facilities and Events

Fashion Program

Strong Workforce

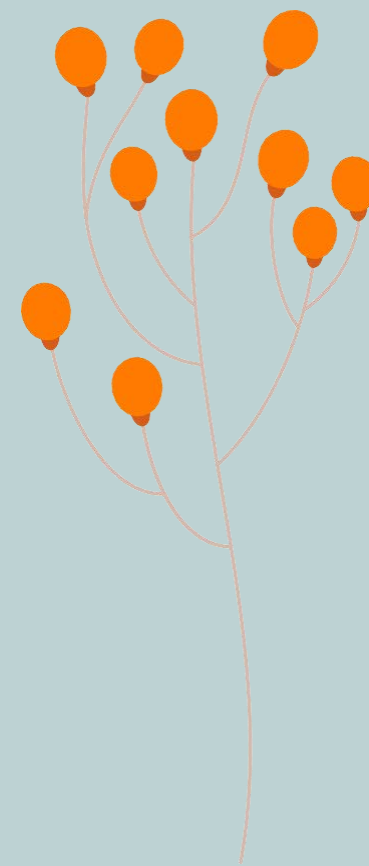
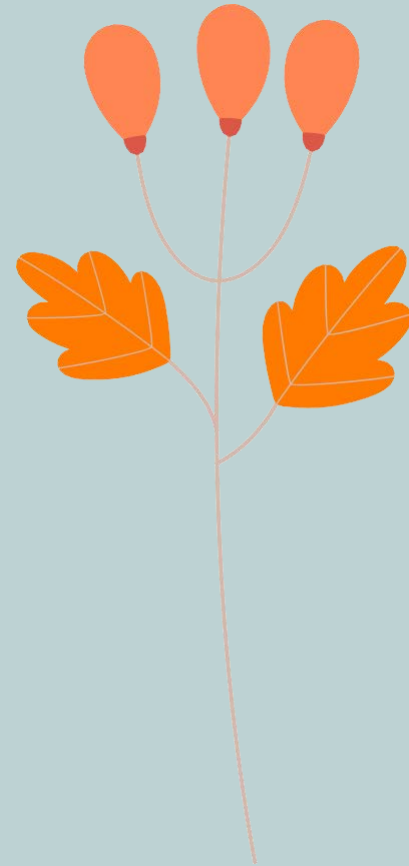
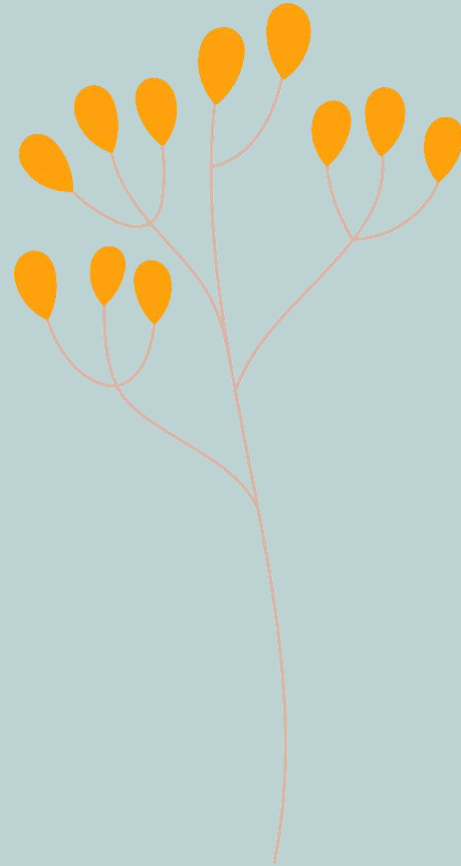
SDMC Foundation

Veterans

Community Partners



# Questions





THANK YOU  
FOR A GREAT  
DAY!