

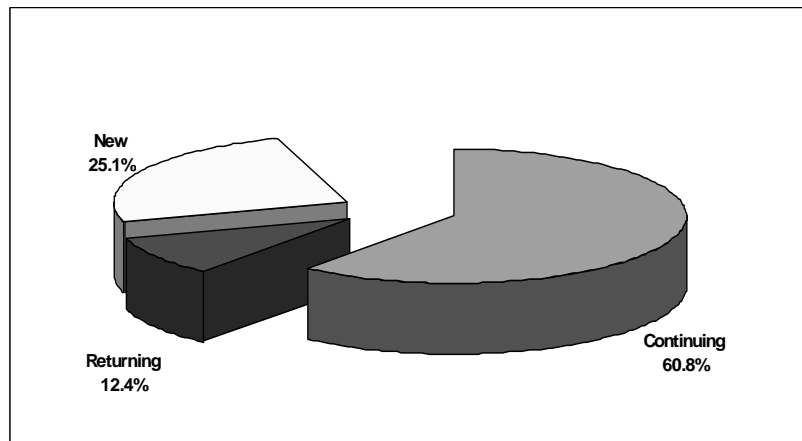
DEMOGRAPHIC INFORMATION

(Data from Mesa College Fact Book, Fall 2002, <http://www.sdccd.net/research>)

Enrollment and Performance

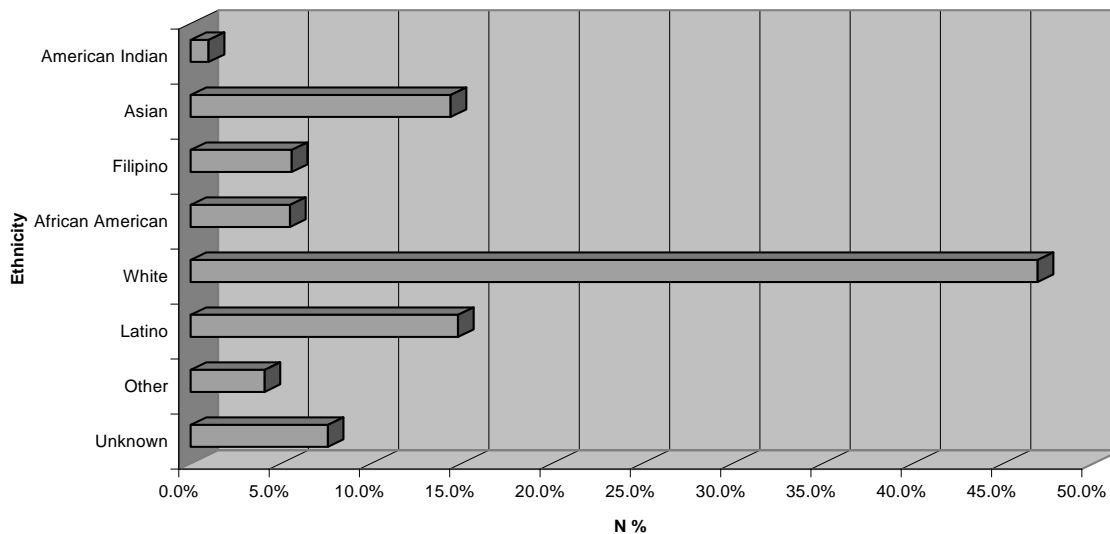
The total fall 2002 student population was 24,095, of whom 54% were female and nearly 55% were between the ages of 18—24 years. The percentage of students between the ages of 18 and 24 has been steadily increasing since fall 1996. Nearly 25% of the students enrolled at Mesa College in fall 2002 were new students (including first-time freshmen or first-time transfer). About 19% of students were first generation college students. About 45% of the students enrolled in 3.0-8.9 units in fall 2002, and part-time students accounted for 80% of the Mesa College student body.

Enrollment Status



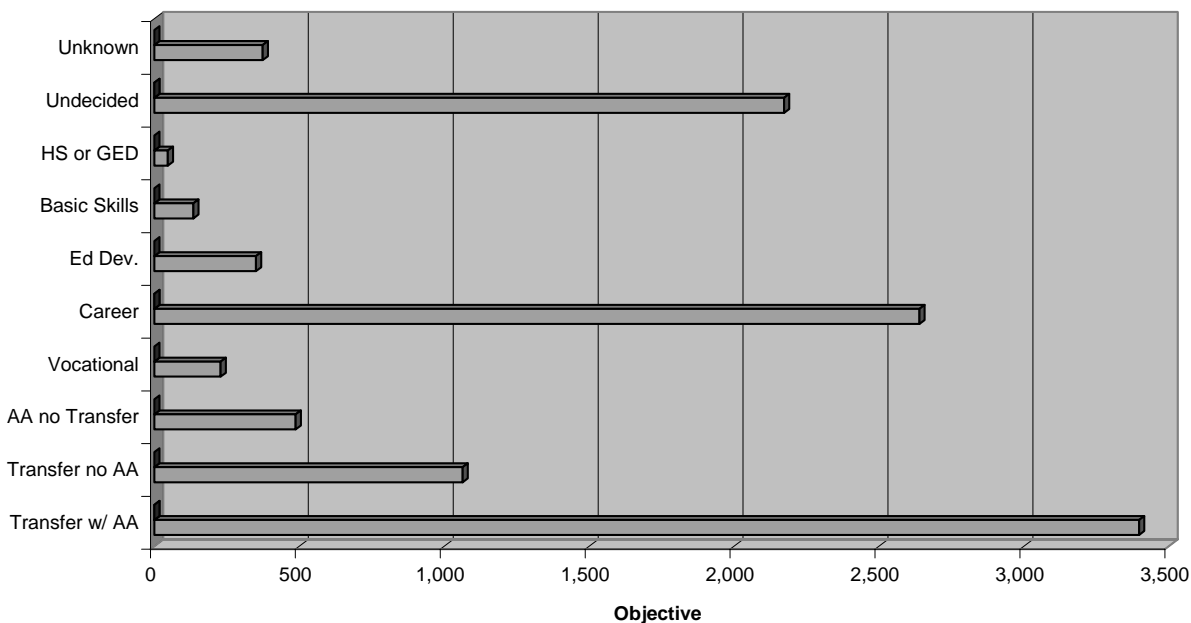
The students at Mesa College reflect the diversity of the surrounding community. In fall 2002, the student body included American Indian 1.0%, Asian/Pacific Island 14.4%, African-American 5.5%, Latino 14.8%, Filipino 5.6%, and White 46.9%. The percentage of white students has been steadily decreasing since fall 1993.

Student Ethnicity



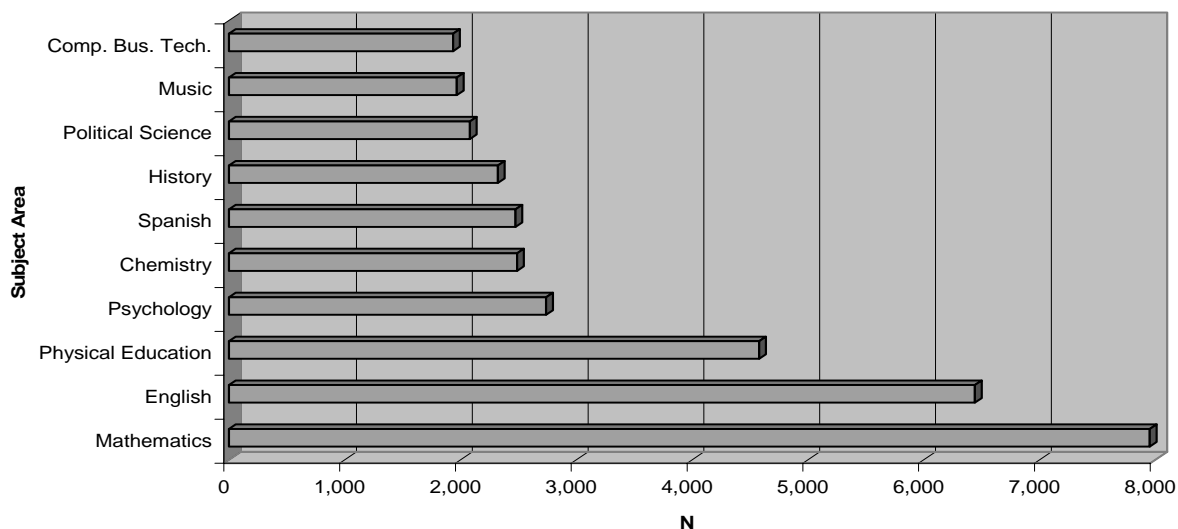
The highest percentage of students (51.3%) plan to transfer to 4-year colleges and universities either with or without the associate degree. Of these, over 36% indicated that their educational objective was to transfer with an associate degree. Of Mesa's student population, 22.4% seek new careers or advancement and upgrading in current ones.

Educational Objective



The top ten enrollment disciplines account for 54% of total enrollments. In decreasing order they are: mathematics (12.2%), English (9.8%), Physical Education (7.0%), Psychology (4.2%), Chemistry (3.8%), Spanish (3.8%), History (3.5%), Political Science (3.2%), Music (3.0%), and Business Computer Technology (3.0%). Rankings for top enrollment disciplines have remained steady for several years.

Top Enrollment Disciplines Number of Enrollments



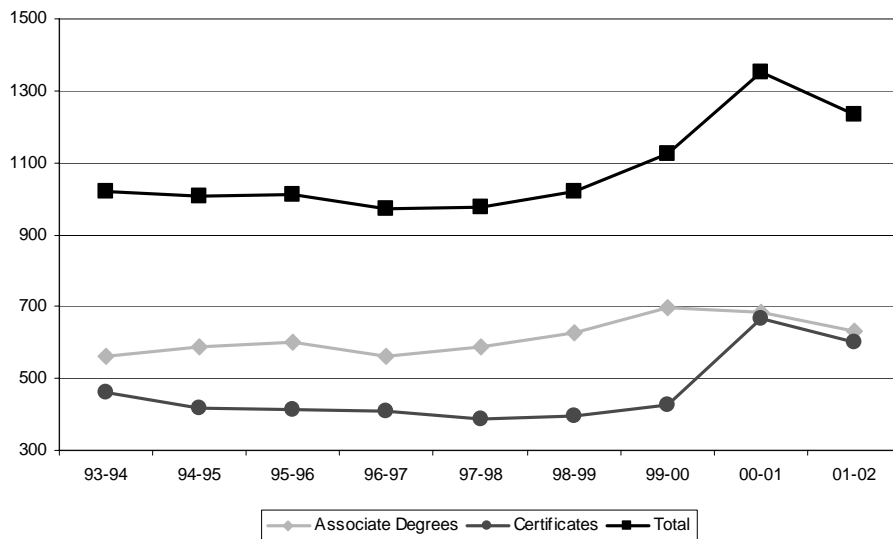
The overall average term GPA in fall 2002 was 2.61 with a successful (grade of C or better) course completion rate of 64%. About 83% of students who enrolled at Mesa College completed the term. For first-time freshmen, the fall to spring persistence rate was 69%.

Degrees and Certificates

The total number of associate degrees awarded has steadily increased since the 1993-94 academic year. In 2002—03, a total of 1,527 associate degrees and certificates of achievement (18 units or more) were awarded. Females received 58% of the associate degrees awarded in 2002.

The 2002 Associate Degree recipients from Mesa College consisted of 52% whites, 16% Asians/Pacific Islanders, 12% Latinos, 5% African American, and 5% Filipinos.

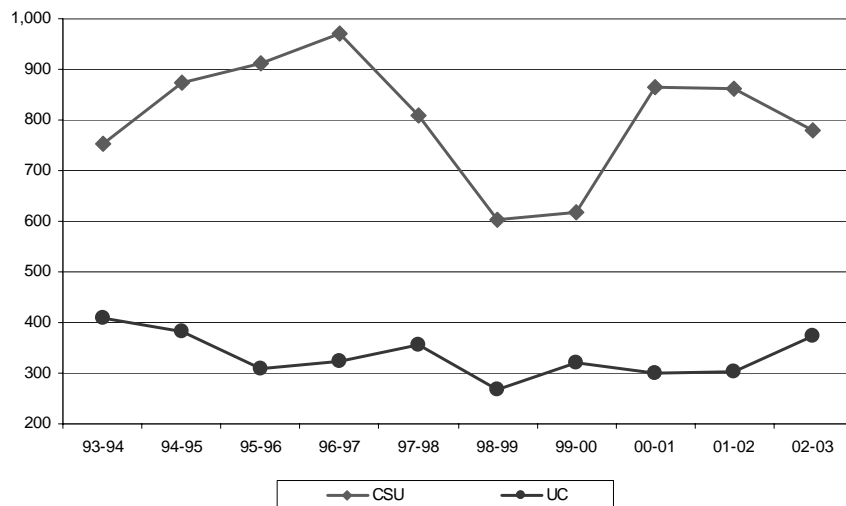
Degrees and Certificates Awarded



Transfers to CSU and UC

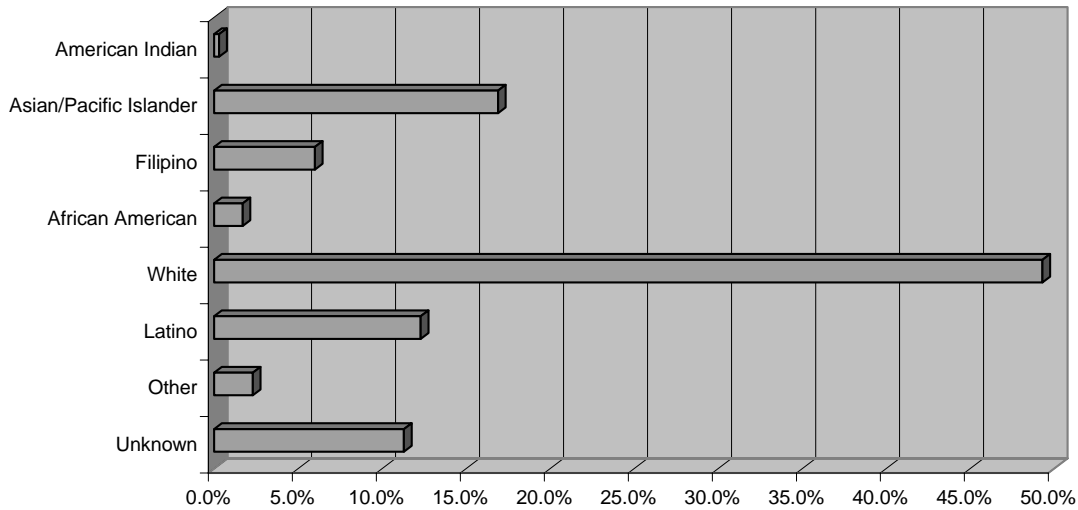
The number of Mesa College students who transferred to the CSU system was 779 and the number of Mesa College who transferred to the UC system was 373 in 2002-03.

Transfers to CSU and UC



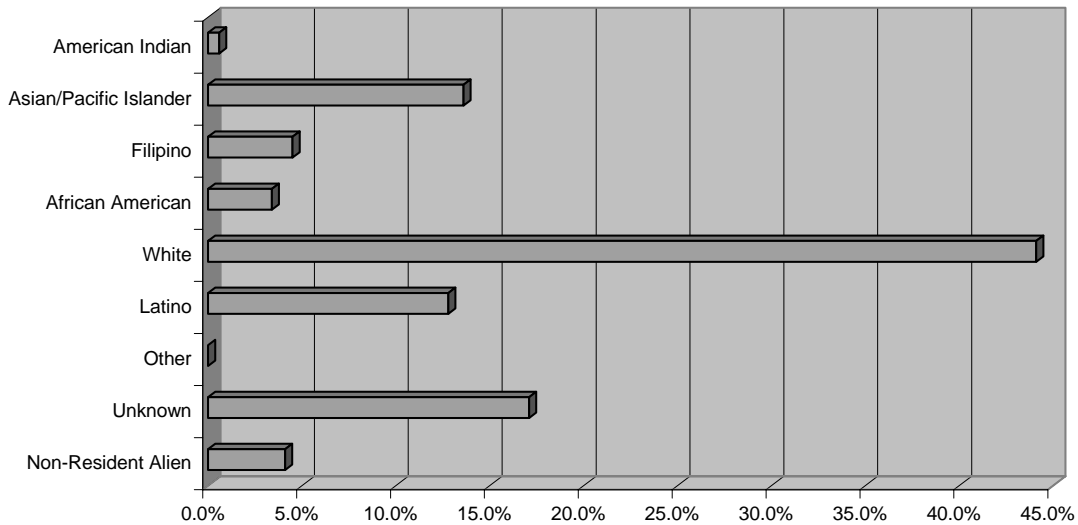
About 41% of the 2002-03 transfers to CSU schools from Mesa College were white, 14% Asians/Pacific Islanders, 4% African American, 13% Latino, and 5% Filipino. About 43% of the 2002-03 transfers to UC schools from Mesa College were white, 22% Asians/Pacific Islanders, 3% African American, 10% Latino, and 3% Filipino.

Transfers to UC by Ethnicity



| Ethnicity | 2001-02 | |
|------------------------|-------------|---------------|
| | UC Transfer | % of Total |
| American Indian | 1 | 0.3% |
| Asian/Pacific Islander | 51 | 16.9% |
| Filipino | 18 | 6.0% |
| African American | 5 | 1.7% |
| White | 149 | 49.3% |
| Latino | 37 | 12.3% |
| Other | 7 | 2.3% |
| Unknown | 34 | 11.3% |
| Total | 302 | 100.0% |

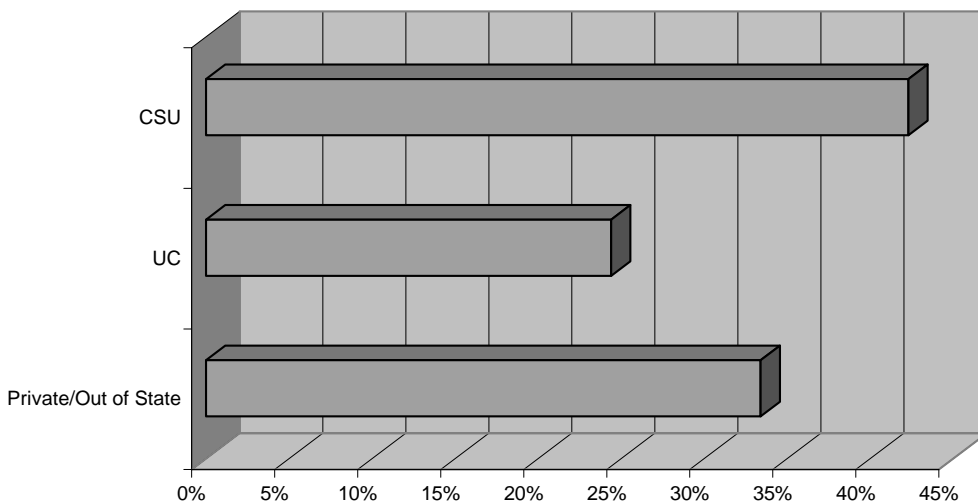
Transfers to CSU by Ethnicity



| Ethnicity | 2001-02 | |
|------------------------|--------------|---------------|
| | CSU Transfer | % of Total |
| American Indian | 5 | 0.6% |
| Asian/Pacific Islander | 117 | 13.6% |
| Filipino | 39 | 4.5% |
| African American | 29 | 3.4% |
| White | 380 | 44.1% |
| Latino | 110 | 12.8% |
| Other | 0 | 0.0% |
| Unknown | 147 | 17.1% |
| Non-Resident Alien | 35 | 4.1% |
| Total | 862 | 100.0% |

A significant number of Mesa College students elect to transfer to private or out-of-state institutions. Using National Student Clearinghouse data, the District Research staff tracked the 1994 student cohort and determined that during the time period 1995—2002, 2,943 students transferred to out-of-state or private institutions. For this same cohort and time period, 3,729 students transferred to CSU and 2,148 transferred to UC. A total of 8,820 out of a total cohort of 21,818 Mesa students or 40% transferred.

**Mesa Transfers to CSU, UC and
Private/Out of State (1994 Transfer Cohort)**



| Receiving Institution | Number | % of Total |
|-----------------------|--------------|---------------|
| CSU | 3,729 | 42.3% |
| UC | 2,148 | 24.4% |
| Private/Out of State | 2,944 | 33.4% |
| Total | 8,821 | 100.0% |

Faculty and Staff Demographics

In 2002, a total of 982 people were employed at Mesa College. Over 77% (n=759) of the Mesa College employees were faculty with tenured or tenure track permanent academic faculty constituting 30% (228) of this group. Females account for 59% of managers, 53% of supervisors, and 55% of all employees. Almost 30% of faculty are aged 50 or above, whereas about 20% of the classified staff are in this age range. Latinos constituted 11% of the total employees; Asians/Pacific Islanders 12%; African-Americans 7%; and Native Americans 1%. The table below shows a comparison of ethnicity between the regional population as indicated on the 2000 Census and Mesa College employees.

San Diego Mesa College Employee Ethnicity, 2002-03

| Ethnicity | Mesa College | SD County 2000 Census | Difference |
|---|--------------|-----------------------|------------|
| White | 60% | 55% | +5.0 |
| Hispanic or Latino | 12% | 26.7% | -14.7 |
| Asian or Pacific Islander | 11% | 9.1% | -1.9 |
| African American | 7% | 5.5% | -1.5 |
| Native American (American Indian or Alaskan Native) | 1% | 0.5% | +0.5 |
| Multiracial or Other | 9% | 3.1% | +5.9 |
| Total | 100% | 99.9% | -- |